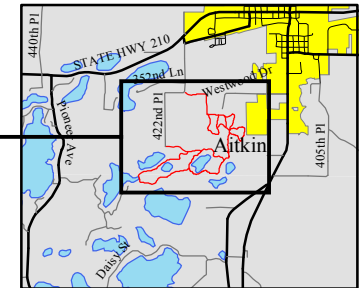
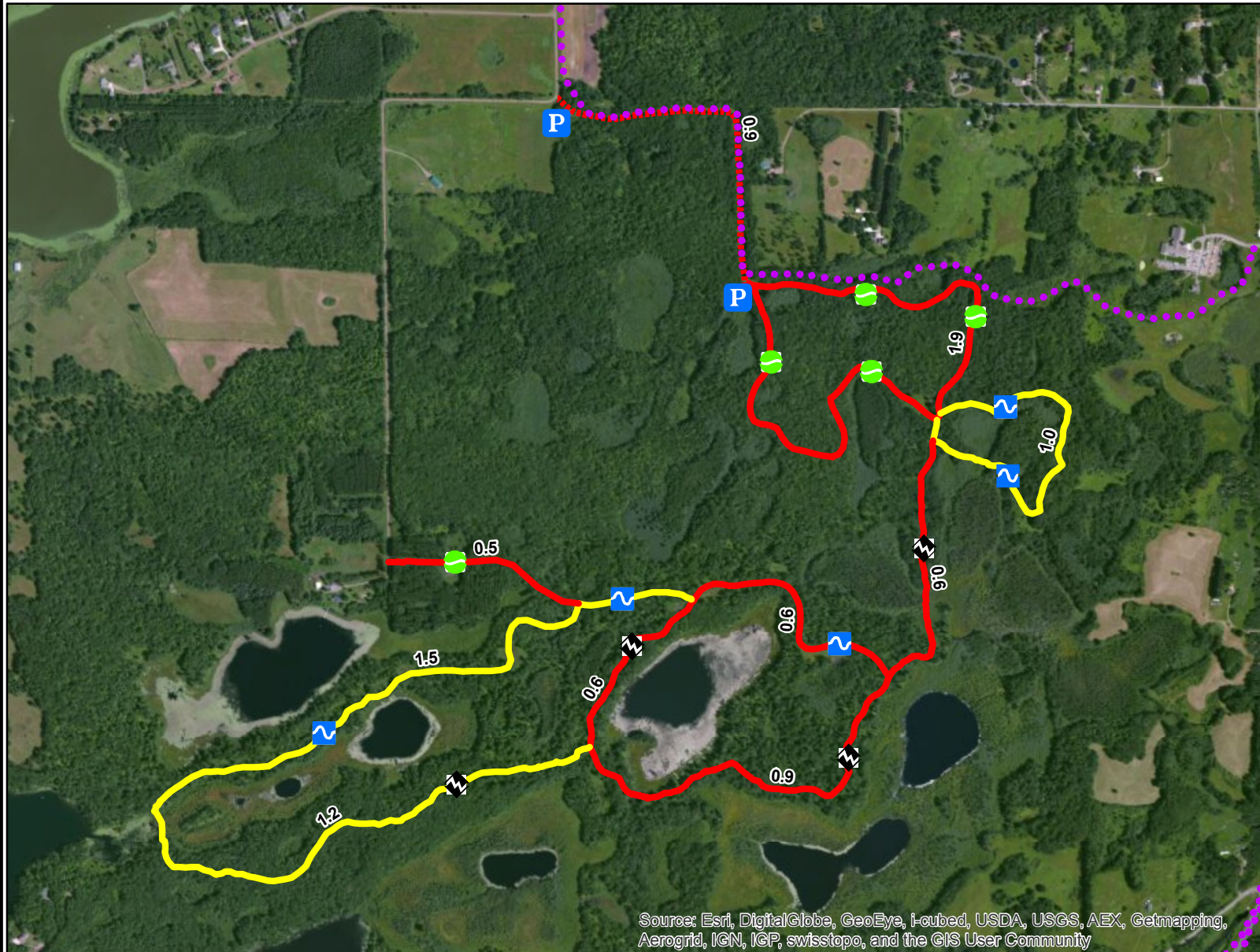


No Achen Bicentennial XC-Ski Trail (Tank Trails)

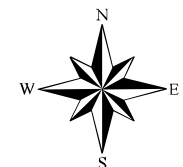
9.2 Km (5.9 Mi.)



Trail is located approximately 1.5 miles West of US 169 and State Hwy 210 intersection in Aitkin, then South on CR 41 (422nd Pl) .75 miles South to parking lot.

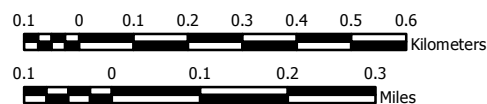
- Difficult - 3.3 Km, 2.1 Mi.
- Intermediate - 3.1 Km, 2 Mi.
- Easy - 2.8 Km, 1.8 Mi.
- Parking
- Skate & Classic Skiing
- Classic Skiing Only
- Access Road - 0.9 Km, 0.5 Mi.
- Snowmobile Trail

Trail distances shown are in kilometers.



Trail provided and maintained by the Aitkin County Land Department.

Source: Esri, DigitalGlobe, GeoEye, i-cubed, USDA, USGS, AEX, Getmapping, Aerogrid, IGN, IGP, swisstopo, and the GIS User Community



Trail access courtesy of private property owners.
Please stay on designated trails and respect private property.

Trails maintained using local Grant in Aid funding.

For additional information please contact:
Aitkin County Land Department @ 218-927-7364
acd@co.aitkin.mn.us
www.co.aitkin.mn.us