



# No Achen XC-Ski Trail (Tank Trails)

(9.2 Km/5.9 Mi.)

## Legend

-  Snowmobile Trail
-  XC Ski Trail
-  Access Road

 Difficult - 2.7 Km, 1.7 Mi.

 Intermediate - 3.7 Km, 2.3 Mi.

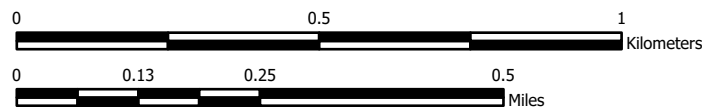
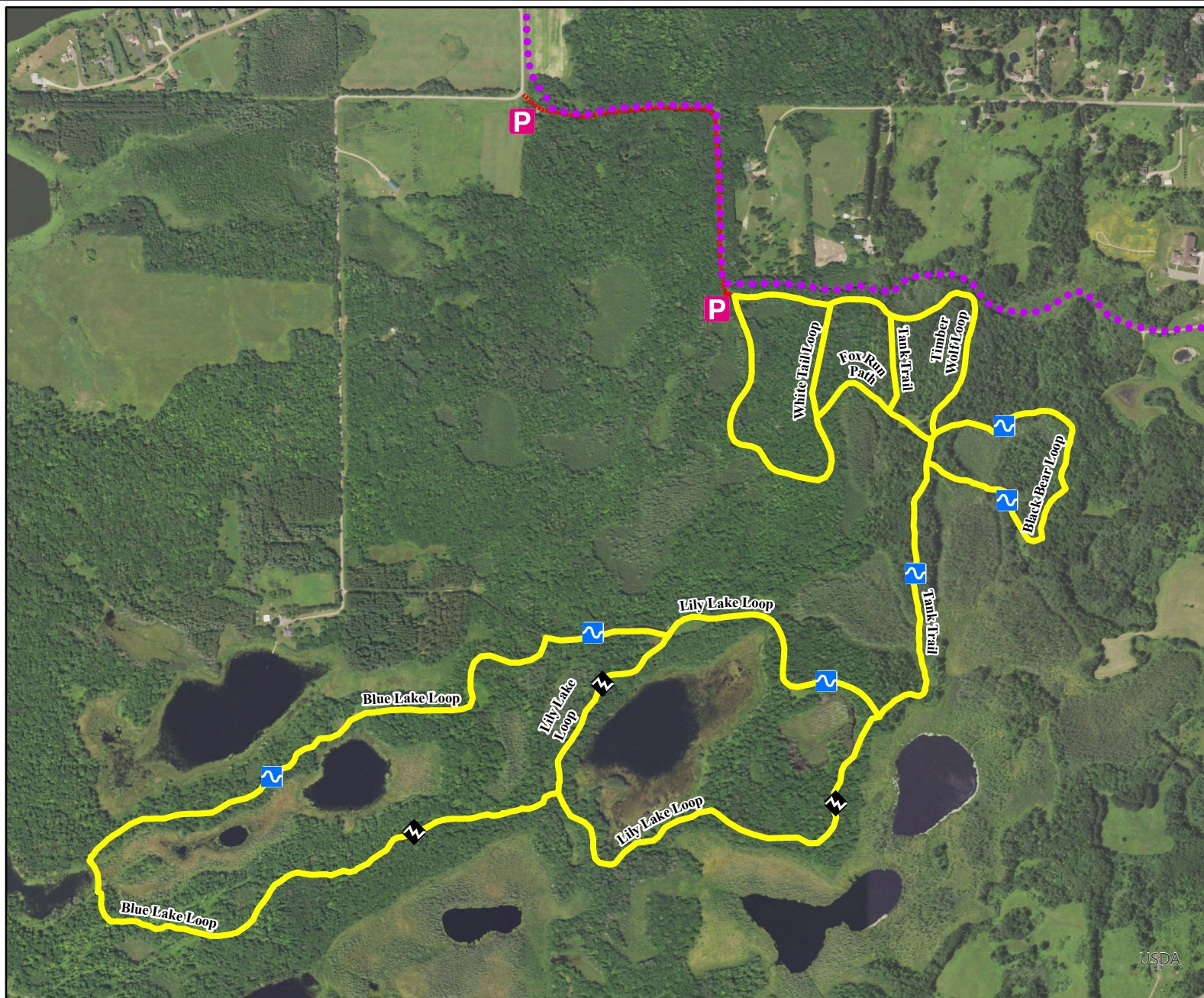
 Parking

Trails are rated Easy unless otherwise symbolized.  
Trail distances shown are in kilometers

Trail provided and maintained by the  
Aitkin County Land Department  
MN Ski Pass Required

For additional information please contact:  
Aitkin County Land Department @ 218-927-7364  
acl@co.aitkin.mn.us  
www.co.aitkin.mn.us

Trail located approx. 1.5 mi. west from  
Hwy. 169 & Hwy 210 intersection, south  
on 422nd Pl .7 mi. to trail access road on left.



Trail access courtesy of private property owners.  
Please stay on designated trails and respect  
private property.

Trails maintained using local  
Grant in Aid funding.

Date: 4/23/2021

Map prepared by Aitkin County for graphic display purposes only,  
Aitkin County assumes no liability for any errors, omissions or inaccuracies herein contained.

